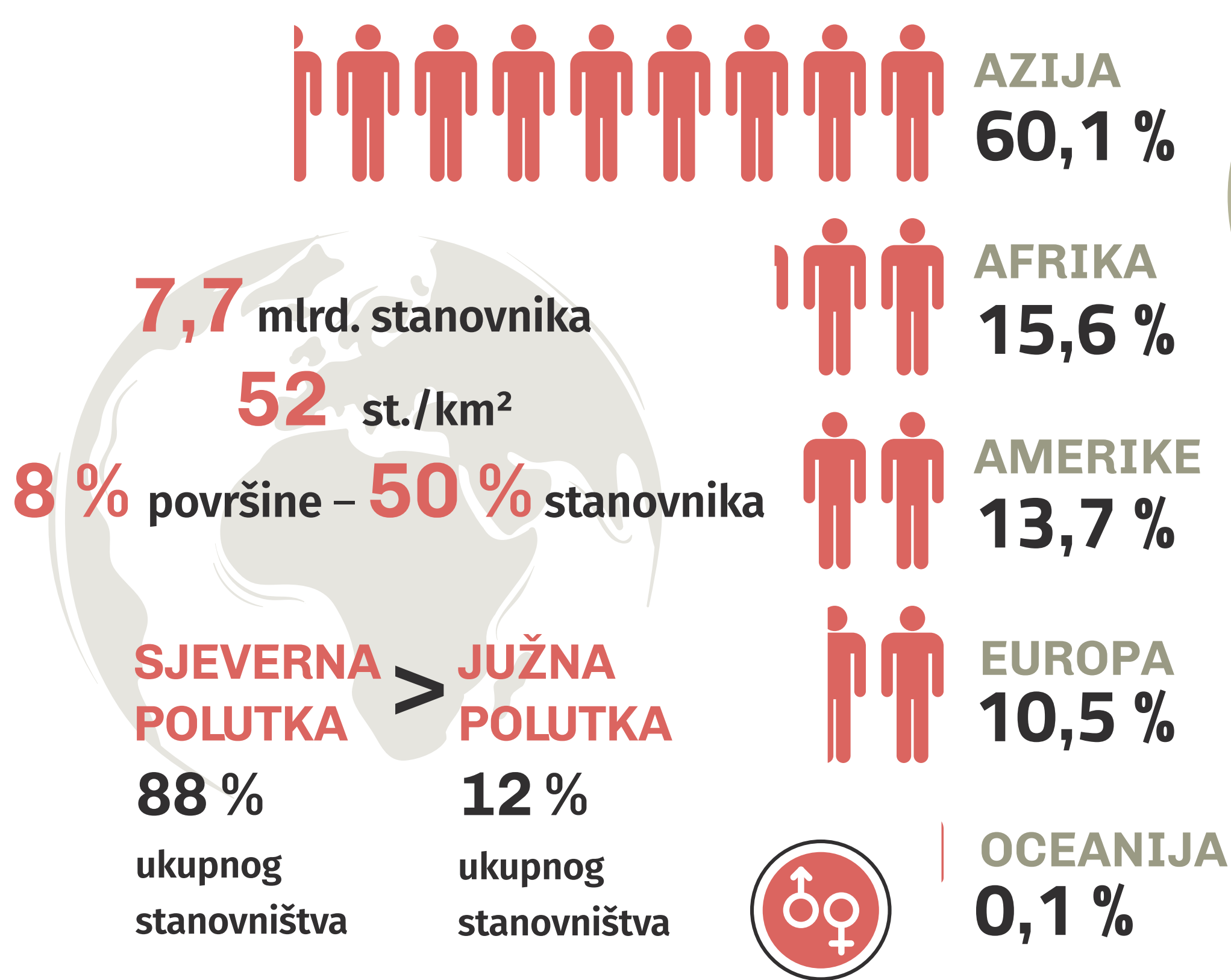




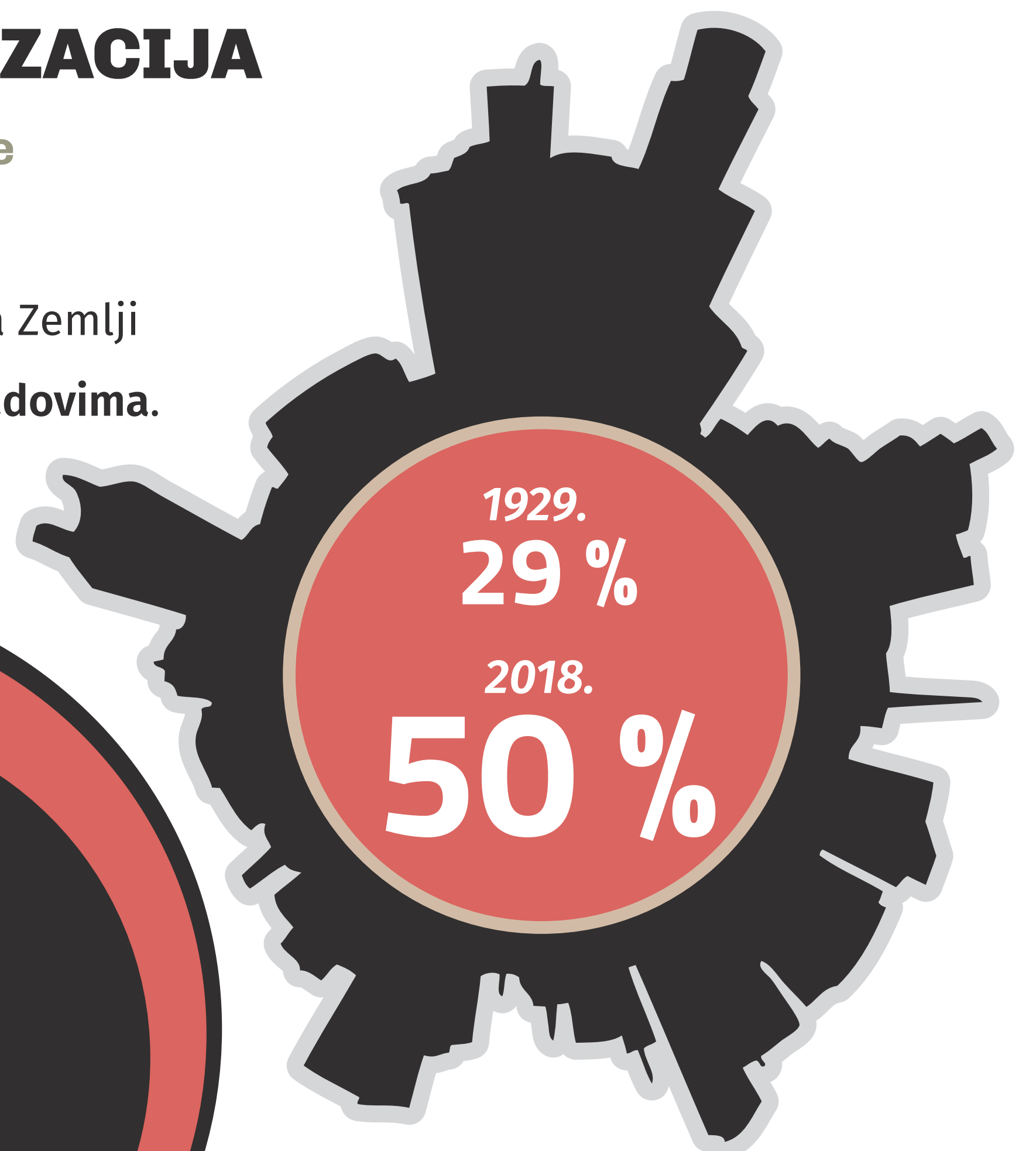
# STANOVNIŠTVO SVIJETA

## STANOVNIŠTVO PO KONTINENTIMA

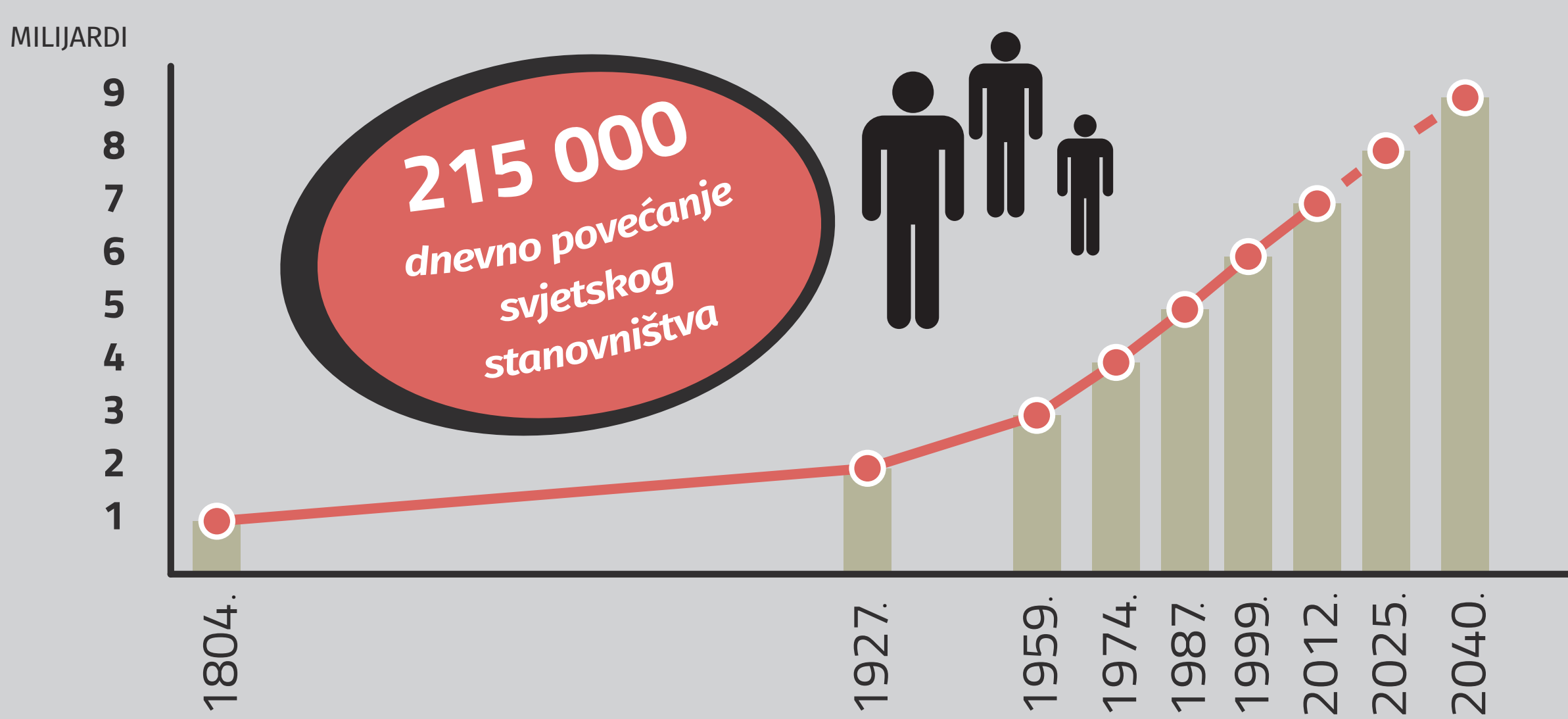


## URBANIZACIJA

2050. godine  
**64 %**  
stanovnika na Zemlji  
živjet će u gradovima.

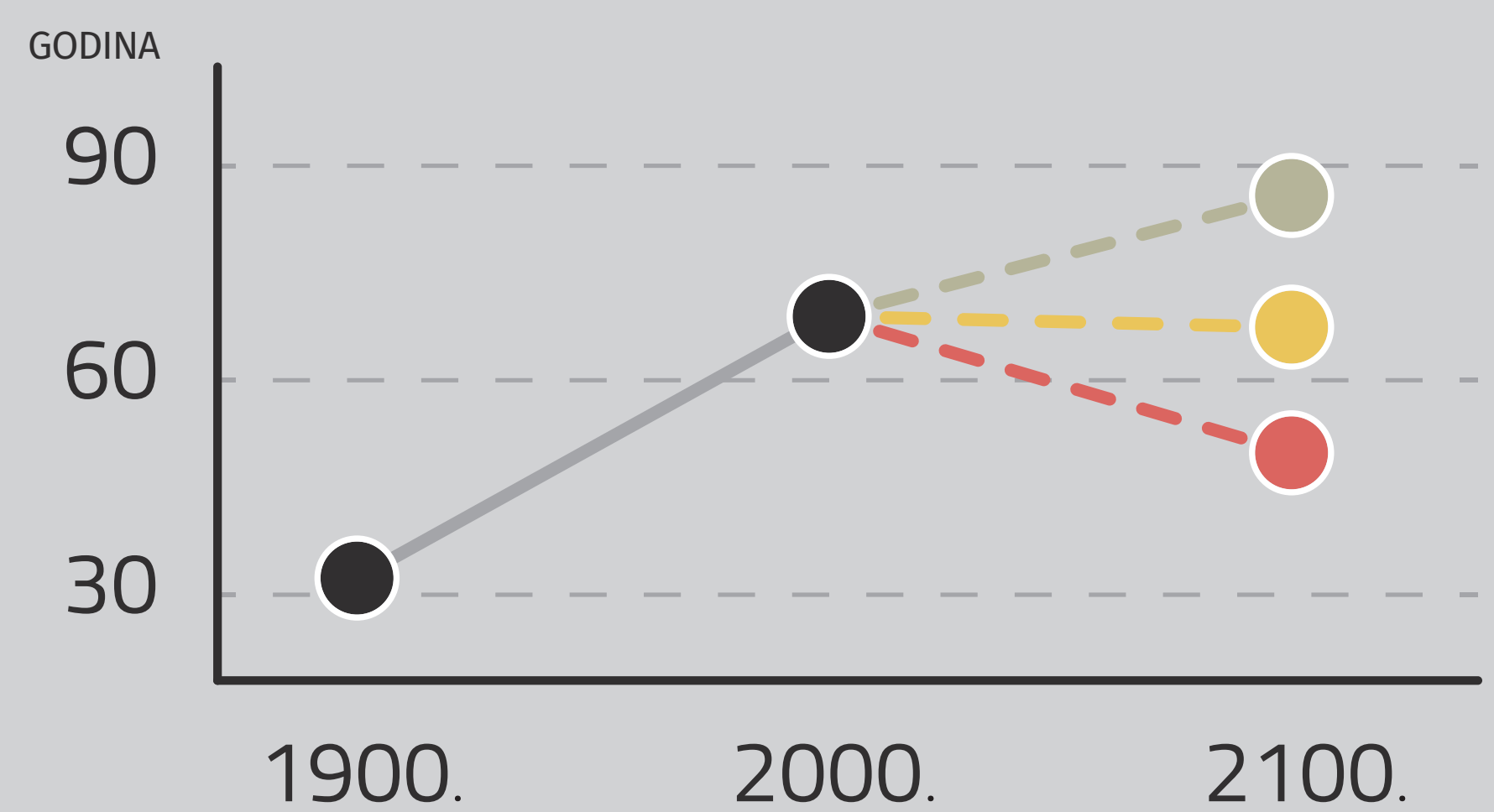


## PORAST SVJETSKE POPULACIJE

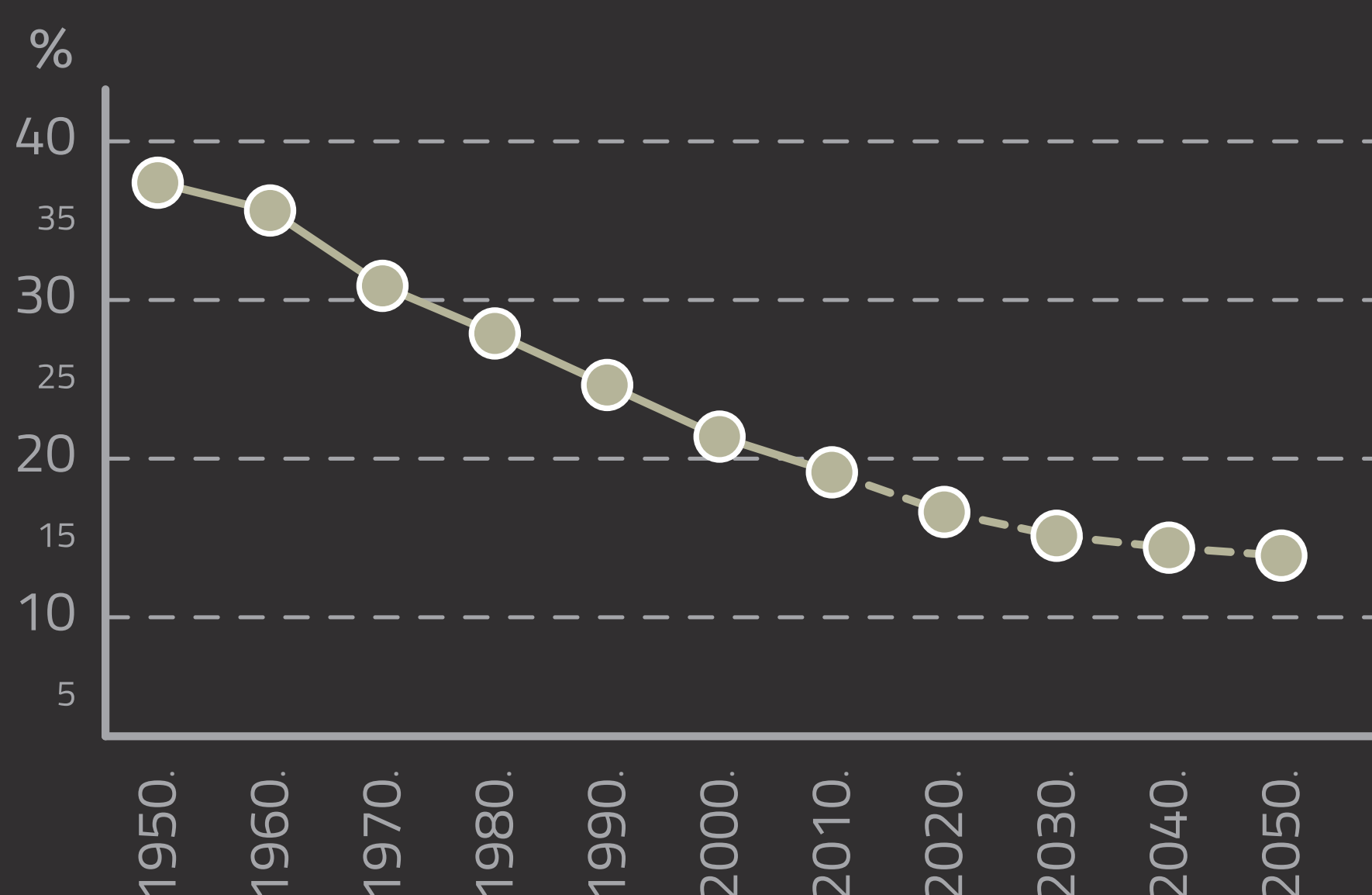


## OČEKIVANA ŽIVOTNA DOB

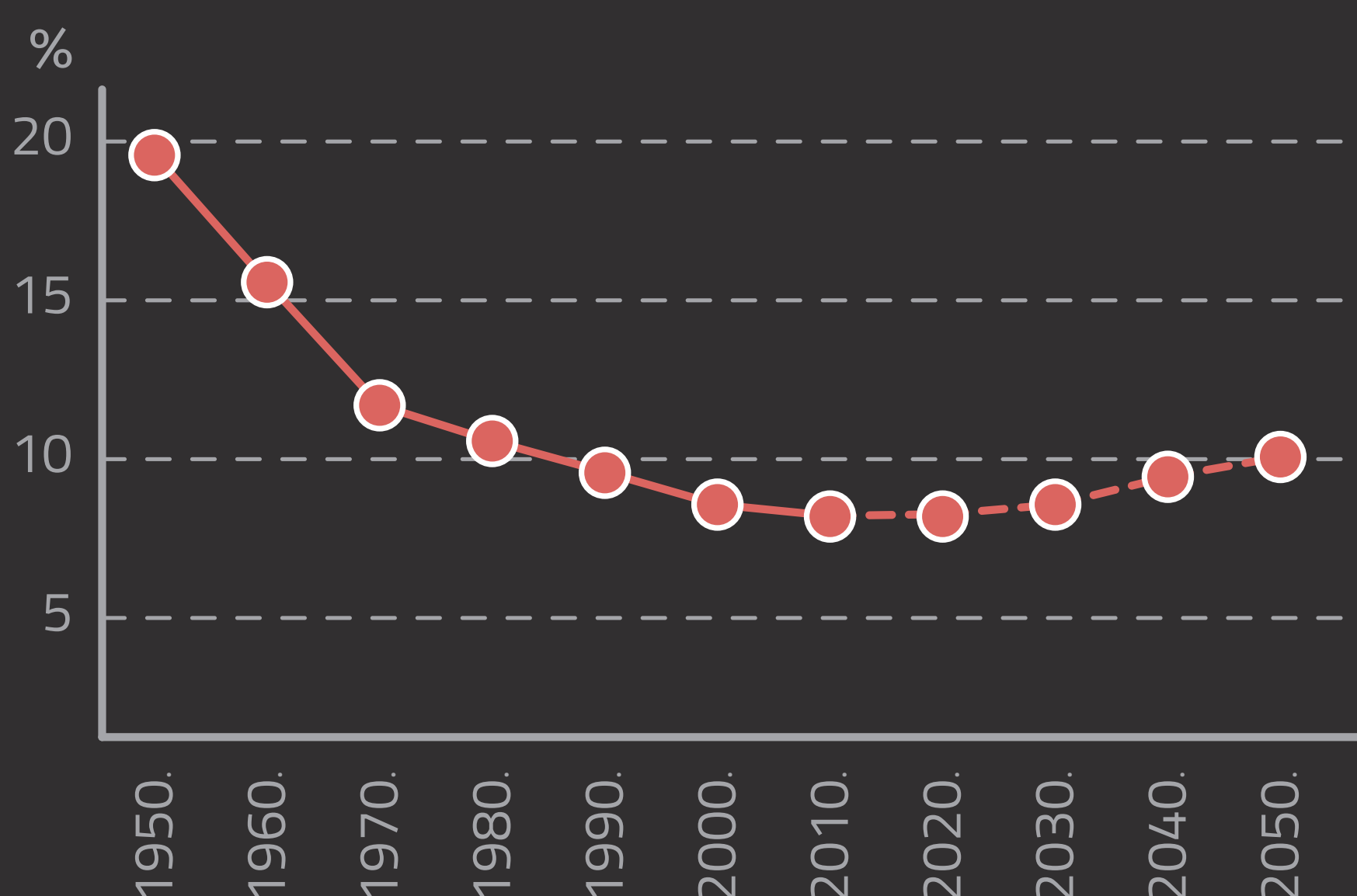
Više nego dvostruka u posljednjih 100 godina.



## STOPA RODNOSTI



## STOPA SMRTNOSTI



## PROSJEČNA DOB

